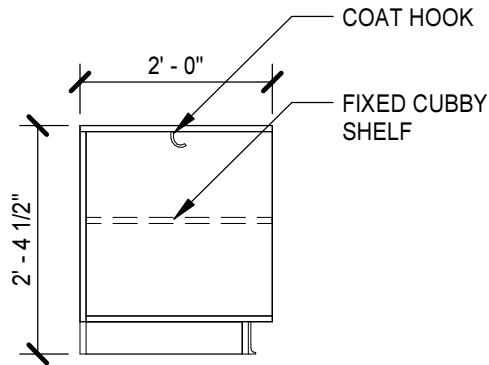


2 **30"H LOW CUBBY CABINET**
 E.1 1/2" = 1'-0"



1 **SECTION**
 E.1 E.1 1/2" = 1'-0"

QUANTITY	FINISH	ROOM #	SCHOOL NAME

DRAWING TITLE:
E.1 - 30"H LOW CUBBY CABINET

CONTRACT
 DWG NO.:

PROJECT:
NEWPORT NEWS ELEM. SCHOOLS CASEWORK PROTOTYPES
 School Address:

MOSELEY ARCHITECTS

3200 NORFOLK STREET, RICHMOND, VIRGINIA, 23230
 PHONE (804) 794-7555 FAX (804) 355-5690
 MOSELEYARCHITECTS.COM

DRAWN BY:
SCRUMP

ATTACHMENT TO:

SUPPLEMENTAL DWG. NO.:

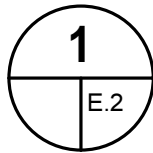
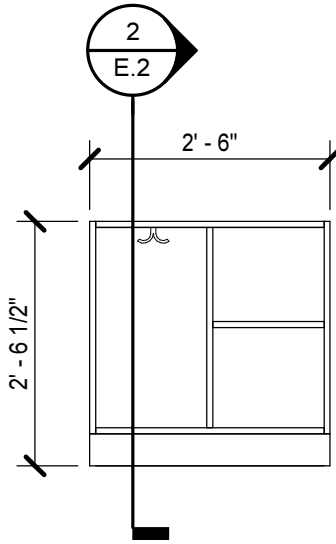
DATE:
11/22/16

PROJECT NO.:

544208

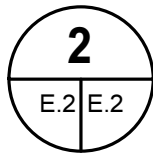
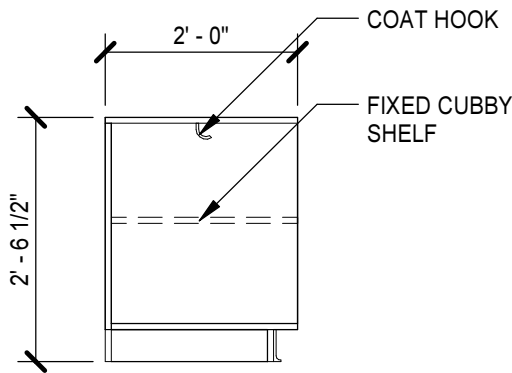
E.1

1/11/2017 4:36:07 PM



32"H LOW CUBBY CABINET

1/2" = 1'-0"



SECTION

1/2" = 1'-0"

QUANTITY	FINISH	ROOM #	SCHOOL NAME

DRAWING TITLE:
E.2 - 32"H LOW CUBBY CABINET

CONTRACT
DWG NO.:

PROJECT:
NEWPORT NEWS ELEM. SCHOOLS CASEWORK PROTOTYPES
School Address:

MOSELEY ARCHITECTS

3200 NORFOLK STREET, RICHMOND, VIRGINIA, 23230
PHONE (804) 794-7555 FAX (804) 355-5690
MOSELEYARCHITECTS.COM

DRAWN BY:
SCRUMP

ATTACHMENT TO:

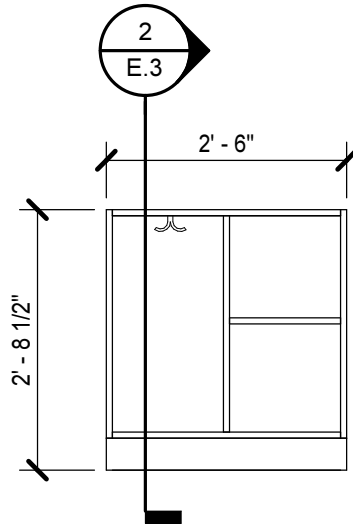
SUPPLEMENTAL DWG. NO.:

DATE:
11/21/16

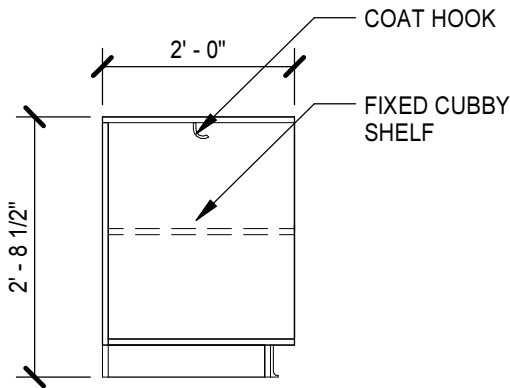
PROJECT NO.:
544208

E.2

1/11/2017 4:36:07 PM



1
E.3
34"H LOW CUBBY CABINET
1/2" = 1'-0"



2
E.3 E.3
SECTION
1/2" = 1'-0"

QUANTITY	FINISH	ROOM #	SCHOOL NAME

DRAWING TITLE:
E.3 - 34"H LOW CUBBY CABINET

CONTRACT
DWG NO.:

PROJECT:
NEWPORT NEWS ELEM. SCHOOLS CASEWORK PROTOTYPES
School Address:

MOSELEYARCHITECTS

3200 NORFOLK STREET, RICHMOND, VIRGINIA, 23230
PHONE (804) 794-7555 FAX (804) 355-5690
MOSELEYARCHITECTS.COM

DRAWN BY:
Author

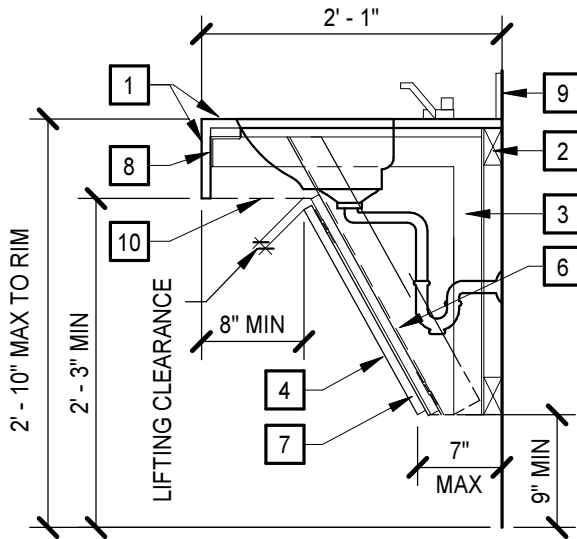
ATTACHMENT TO:

SUPPLEMENTAL DWG. NO.:

DATE:
11/22/16

PROJECT NO.:
544208

E.3



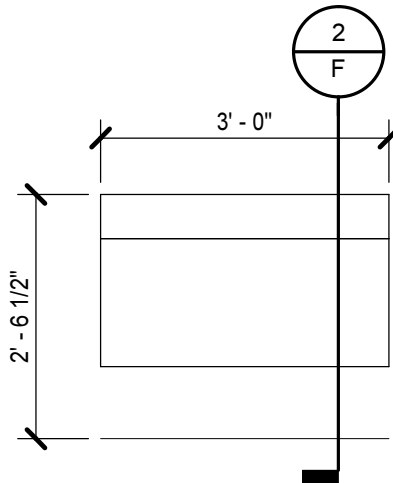
1. COUNTERTOP W/ APRON
2. 2X WD LEDGER ANCHOR AT EACH STUD
3. 2 1/2"x2 1/2"x .185 STL ANGLE BRACKET CENTERED BETWEEN LAVATORIES & AT OPEN ENDS, 4'-0" MAX
4. REMOVABLE PLAM PANEL, 4'-0" WIDE MAX
5. --
6. 1X WD BACKER SCREW-ATTACHED TO STL BRACKET
7. CONT 1X2 WD BLOCKING W/ BRACKETS FOR Z CLIPS
8. 2 1/2"x2 1/2"x.185 STL ANGLE APRON CARRIER CONT
9. BACKSPLASH
10. FINISHED END PANEL BEYOND

2
TYP F

SECTION

NOTE: HEIGHT OF CABINET PLACED ABOVE FINISH FLOOR VARIES

3/4" = 1'-0"



1
TYP F

34"H ACCESSIBLE SINK BASE

1/2" = 1'-0"

HEIGHT AFF			QUANTITY	FINISH	ROOM #	SCHOOL NAME
30"	32"	34"				

DRAWING TITLE:
F - 34"H ACCESSIBLE SINK BASE

CONTRACT
DWG NO.:

PROJECT:
NEWPORT NEWS ELEM. SCHOOLS CASEWORK PROTOTYPES
School Address:

MOSELEY ARCHITECTS
3200 NORFOLK STREET, RICHMOND, VIRGINIA, 23230
PHONE (804) 794-7555 FAX (804) 355-5690
MOSELEYARCHITECTS.COM

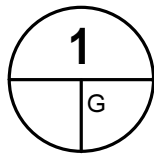
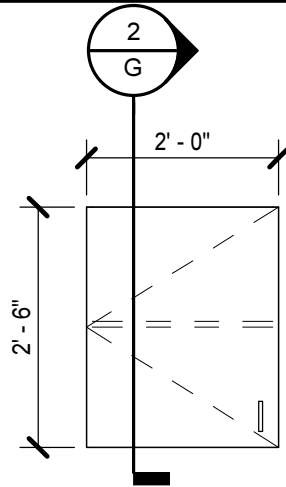
DRAWN BY:
SCRUMP

ATTACHMENT TO:

SUPPLEMENTAL DWG. NO.:
F

DATE:
11/21/16

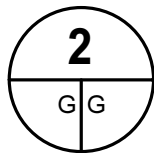
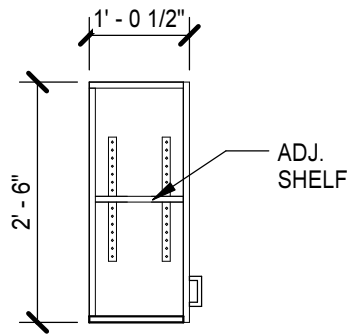
PROJECT NO.:
544208



24"W SINGLE-DR WALL CABINET

1/2" = 1'-0"

NOTE: FOR RIGHT USE OPPOSITE HAND



SECTION

1/2" = 1'-0"

HAND OF CAB.		QUANTITY	FINISH	ROOM #	SCHOOL NAME
RIGHT	LEFT				

DRAWING TITLE:
G - 24"W SINGLE-DR WALL CABINET

CONTRACT
DWG NO.:

PROJECT:
NEWPORT NEWS ELEM. SCHOOLS CASEWORK PROTOTYPES
School Address:

MOSELEY ARCHITECTS

3200 NORFOLK STREET, RICHMOND, VIRGINIA, 23230
PHONE (804) 794-7555 FAX (804) 355-5690
MOSELEYARCHITECTS.COM

DRAWN BY:
SCRUMP

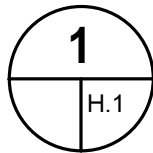
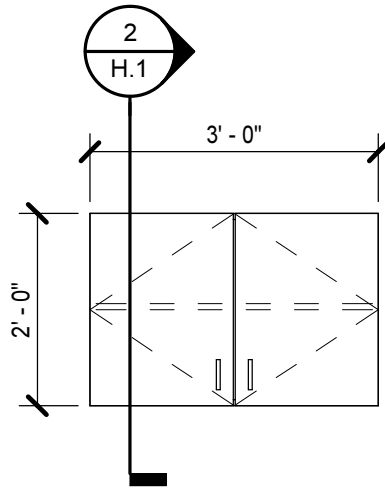
ATTACHMENT TO:

SUPPLEMENTAL DWG. NO.:

DATE:
11/21/16

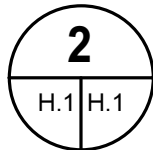
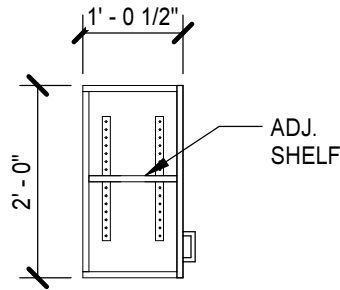
PROJECT NO.:
544208

G



36"W DOUBLE-DR WALL CABINET

1/2" = 1'-0"



SECTION

1/2" = 1'-0"

QUANTITY	FINISH	ROOM #	SCHOOL NAME

DRAWING TITLE:
H.1 - 36"W DOUBLE-DR WALL CABINET

CONTRACT
DWG NO.:

PROJECT:
NEWPORT NEWS ELEM. SCHOOLS CASEWORK PROTOTYPES
School Address:

MOSELEYARCHITECTS

3200 NORFOLK STREET, RICHMOND, VIRGINIA, 23230
PHONE (804) 794-7555 FAX (804) 355-5690
MOSELEYARCHITECTS.COM

DRAWN BY:
SCRUMP

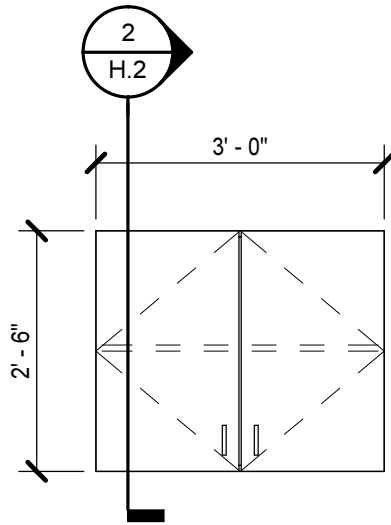
ATTACHMENT TO:

SUPPLEMENTAL DWG. NO.:

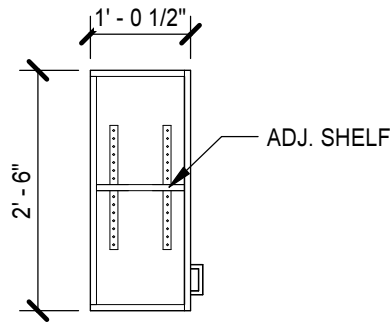
DATE:
11/21/16

PROJECT NO:
544208

H.1



1 **30"H DOUBLE-DR WALL CABINET**
 H.2 1/2" = 1'-0"



2 **SECTION**
 H.2 H.2 1/2" = 1'-0"

QUANTITY	FINISH	ROOM #	SCHOOL NAME

DRAWING TITLE:
H.2 - 30"H DOUBLE-DR WALL CABINET

CONTRACT
 DWG NO.:

PROJECT:
NEWPORT NEWS ELEM. SCHOOLS CASEWORK PROTOTYPES
 School Address:

MOSELEY ARCHITECTS

3200 NORFOLK STREET, RICHMOND, VIRGINIA, 23230
 PHONE (804) 794-7555 FAX (804) 355-5690
 MOSELEYARCHITECTS.COM

DRAWN BY:
SCRUMP

ATTACHMENT TO:

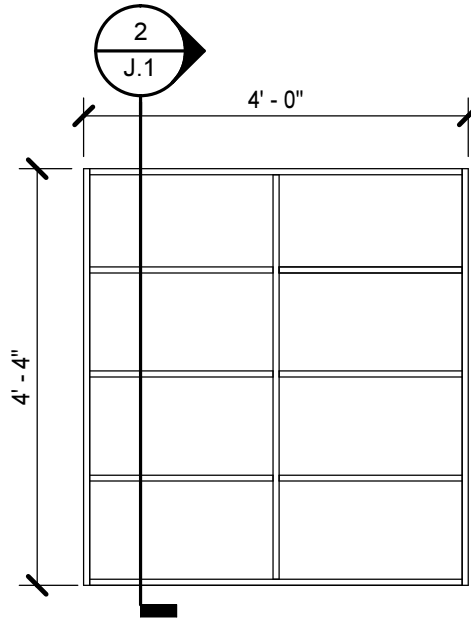
SUPPLEMENTAL DWG. NO.:

DATE:
11/21/16

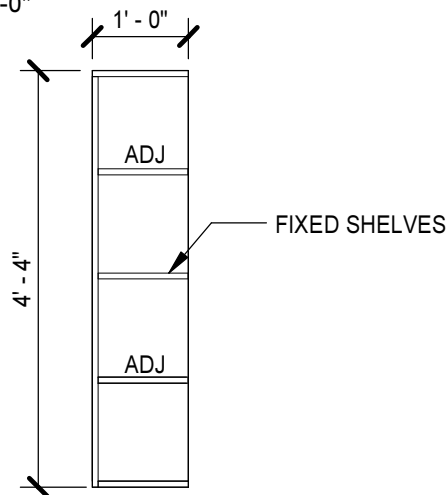
PROJECT NO:
544208

H.2

1/11/2017 4:36:09 PM



1 **12"D HUTCH W/ SHELVES**
 J.1 1/2" = 1'-0"



2 **SECTION**
 J.1 J.1 1/2" = 1'-0"

QUANTITY	FINISH	ROOM #	SCHOOL NAME

DRAWING TITLE:
J.1 - 12"D HUTCH W/ SHELVES

CONTRACT
 DWG NO.:

PROJECT:
NEWPORT NEWS ELEM. SCHOOLS CASEWORK PROTOTYPES
 School Address:

MOSELEY ARCHITECTS

3200 NORFOLK STREET, RICHMOND, VIRGINIA, 23230
 PHONE (804) 794-7555 FAX (804) 355-5690
 MOSELEYARCHITECTS.COM

DRAWN BY:
SCRUMP

ATTACHMENT TO:

SUPPLEMENTAL DWG. NO.:

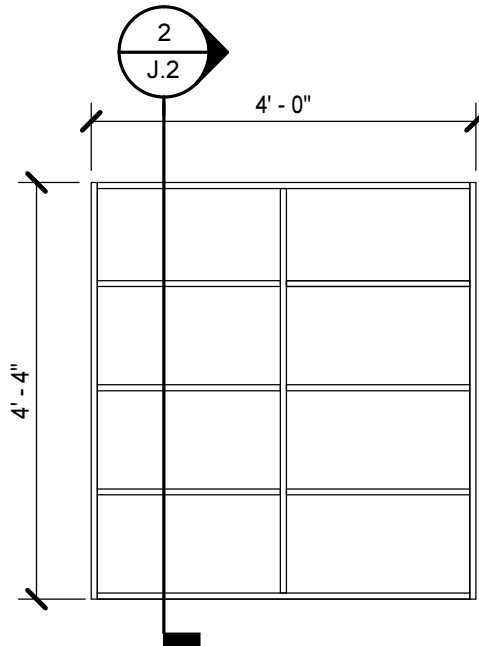
DATE:
11/21/16

PROJECT NO.:

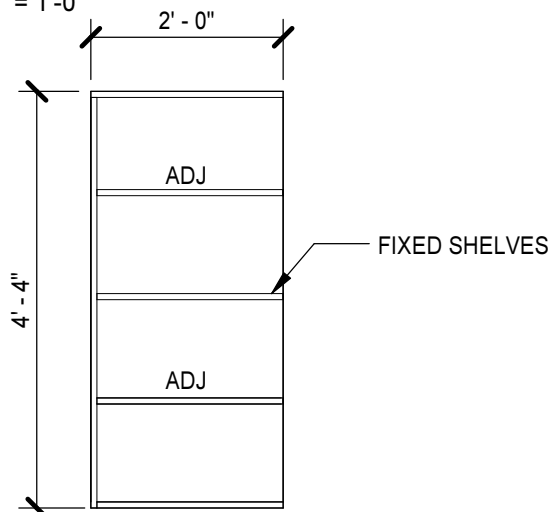
544208

J.1

1/11/2017 4:36:10 PM



1 **25"D HUTCH W/ SHELVES**
 1/2" = 1'-0"



2 **SECTION**
 1/2" = 1'-0"

QUANTITY	FINISH	ROOM #	SCHOOL NAME

DRAWING TITLE:
J.2 - 25"D SHELF STORAGE HUTCH

CONTRACT
 DWG NO.:

PROJECT:
NEWPORT NEWS ELEM. SCHOOLS CASEWORK PROTOTYPES
 School Address:

MOSELEY ARCHITECTS

3200 NORFOLK STREET, RICHMOND, VIRGINIA, 23230
 PHONE (804) 794-7555 FAX (804) 355-5690
 MOSELEYARCHITECTS.COM

DRAWN BY:
SCRUMP

ATTACHMENT TO:

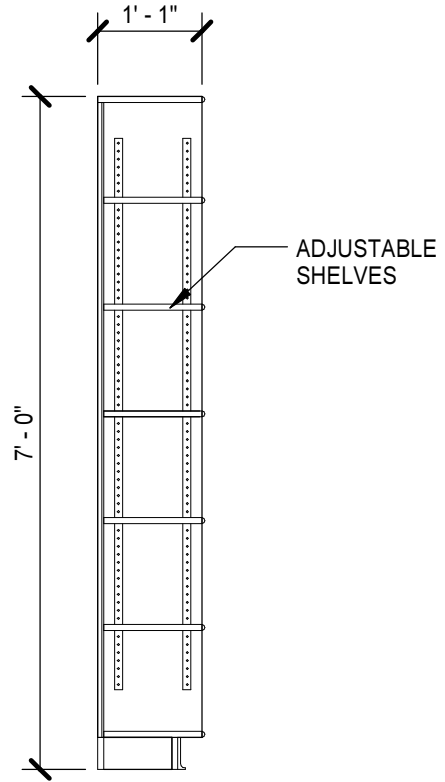
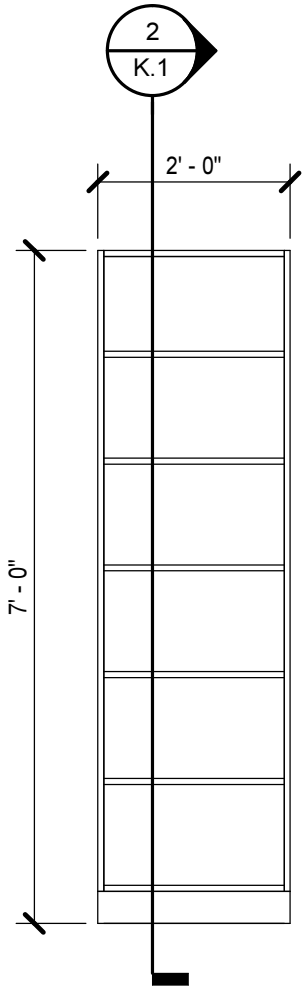
SUPPLEMENTAL DWG. NO.:

DATE:
11/21/16

PROJECT NO.:
544208

J.2

1/11/2017 4:36:10 PM



1 **24"W BOOKCASE**
K.1 1/2" = 1'-0"

2 **SECTION**
K.1 K.1 1/2" = 1'-0"

QUANTITY	FINISH	ROOM #	SCHOOL NAME

DRAWING TITLE:
K.1 - 24"W BOOKCASE

CONTRACT
DWG NO.:

PROJECT:
NEWPORT NEWS ELEM. SCHOOLS CASEWORK PROTOTYPES
School Address:

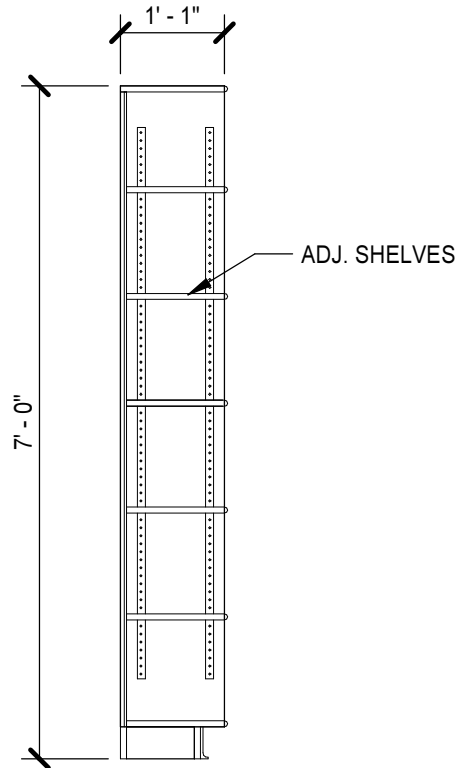
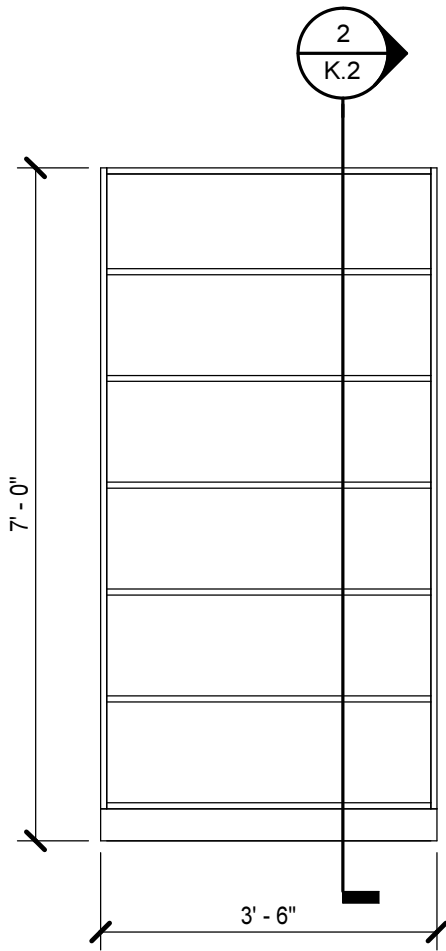
MOSELEY ARCHITECTS
3200 NORFOLK STREET, RICHMOND, VIRGINIA, 23230
PHONE (804) 794-7555 FAX (804) 355-5690
MOSELEYARCHITECTS.COM

DRAWN BY:
SCRUMP
DATE:
11/21/16

ATTACHMENT TO:
PROJECT NO:
544208

SUPPLEMENTAL DWG. NO.:
K.1

1/11/2017 4:36:10 PM



1
K.2

42"W TALL BOOKCASE

1/2" = 1'-0"

2
K.2 K.2

SECTION

1/2" = 1'-0"

QUANTITY	FINISH	ROOM #	SCHOOL NAME

DRAWING TITLE:
K.2 - 42"W TALL BOOKCASE

CONTRACT
DWG NO.:

PROJECT:
NEWPORT NEWS ELEM. SCHOOLS CASEWORK PROTOTYPES
School Address:

MOSELEY ARCHITECTS
3200 NORFOLK STREET, RICHMOND, VIRGINIA, 23230
PHONE (804) 794-7555 FAX (804) 355-5690
MOSELEYARCHITECTS.COM

DRAWN BY:
SCRUMP

ATTACHMENT TO:

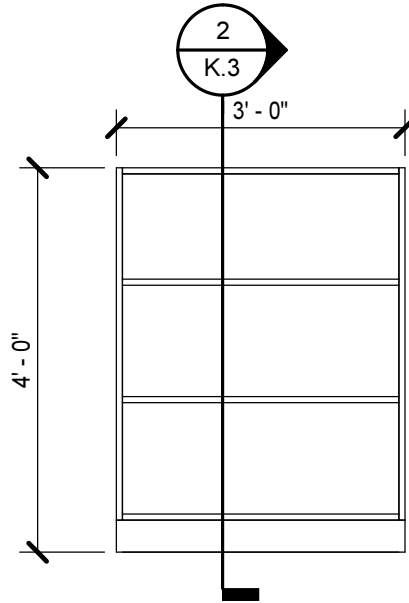
SUPPLEMENTAL DWG. NO.:

DATE:
11/21/16

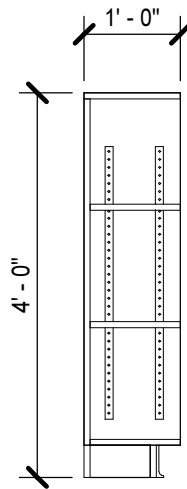
PROJECT NO:
544208

K.2

1/11/2017 4:36:10 PM



1 **K.3 - 48" H BOOKCASE**
 K.3 1/2" = 1'-0"



2 **SECTION**
 K.3 K.3 1/2" = 1'-0"

DRAWING TITLE:
K.3 - 48" H BOOKCASE

CONTRACT
 DWG NO.:

PROJECT:
NEWPORT NEWS ELEM. SCHOOLS CASEWORK PROTOTYPES
 School Address:

MOSELEYARCHITECTS

3200 NORFOLK STREET, RICHMOND, VIRGINIA, 23230
 PHONE (804) 794-7555 FAX (804) 355-5690
 MOSELEYARCHITECTS.COM

DRAWN BY:
SCRUMP

ATTACHMENT TO:

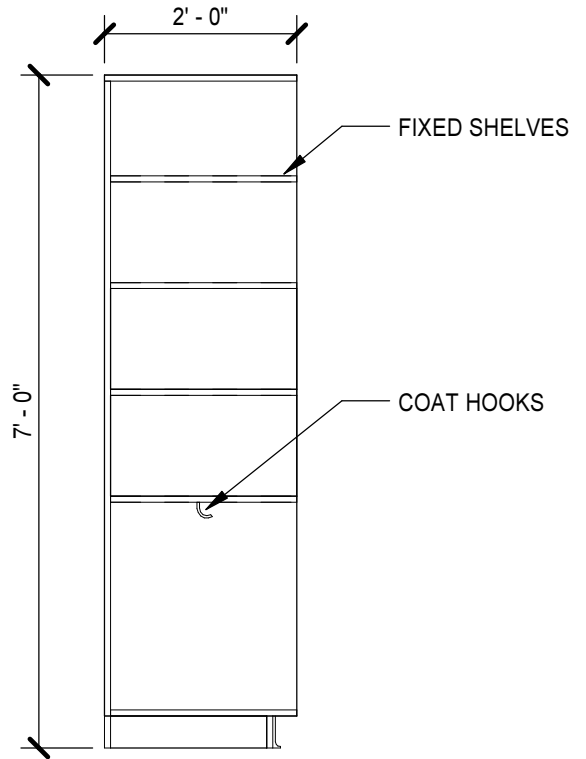
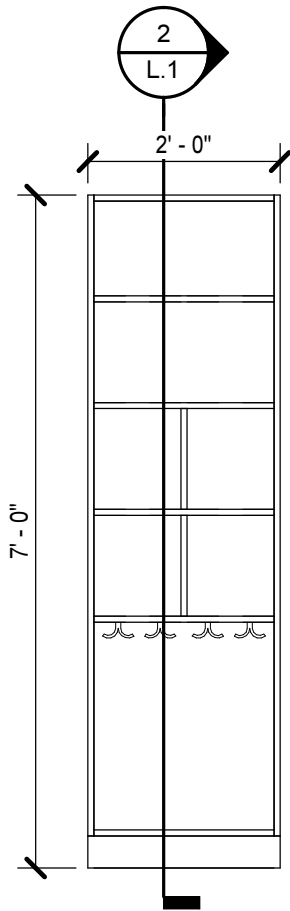
SUPPLEMENTAL DWG. NO.:

DATE:
01/11/17

PROJECT NO:
544208

K.3

1/11/2017 4:36:11 PM



1 **24"W TALL CUBBY**
 L.1 1/2" = 1'-0"

2 **SECTION**
 L.1 L.1 1/2" = 1'-0"

QUANTITY	FINISH	ROOM #	SCHOOL NAME

DRAWING TITLE:
L.1 - 24"W TALL CUBBY CABINET

CONTRACT
 DWG NO.:

PROJECT:
NEWPORT NEWS ELEM. SCHOOLS CASEWORK PROTOTYPES
 School Address:

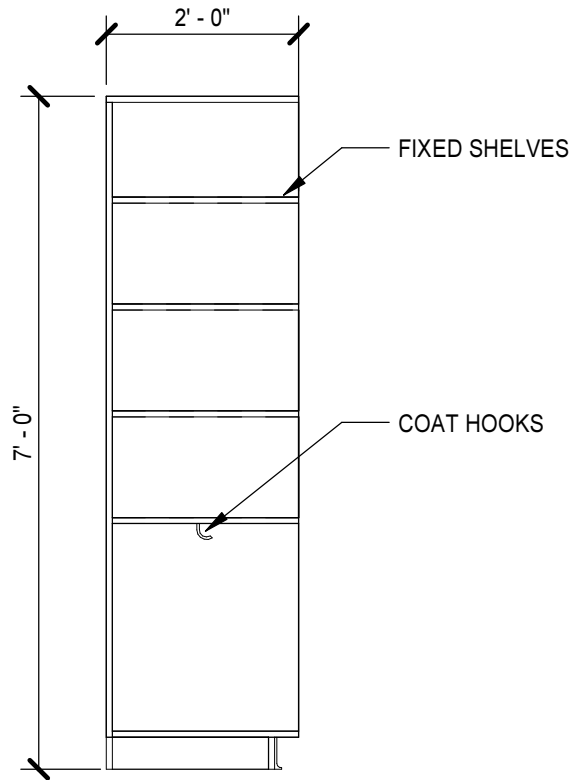
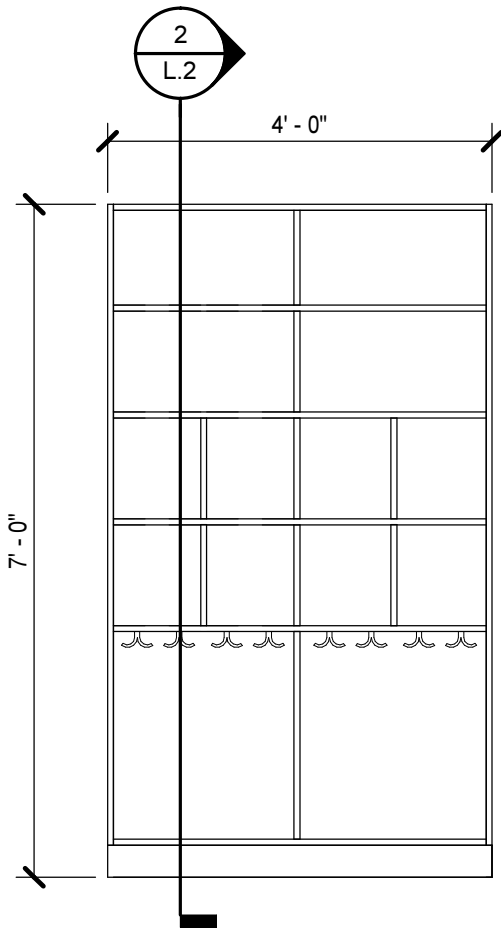
MOSELEY ARCHITECTS
 3200 NORFOLK STREET, RICHMOND, VIRGINIA, 23230
 PHONE (804) 794-7555 FAX (804) 355-5690
 MOSELEYARCHITECTS.COM

DRAWN BY:
SCRUMP
 DATE:
11/21/16

ATTACHMENT TO:
 PROJECT NO:
544208

SUPPLEMENTAL DWG. NO:
L.1

1/11/2017 4:36:11 PM



1 **48"W TALL CUBBY**
L.2 1/2" = 1'-0"

2 **SECTION**
L.2 L.2 1/2" = 1'-0"

QUANTITY	FINISH	ROOM #	SCHOOL NAME

DRAWING TITLE:
L.2 - 48"W TALL CUBBY CABINET

CONTRACT
DWG NO.:

PROJECT:
NEWPORT NEWS ELEM. SCHOOLS CASEWORK PROTOTYPES
School Address:

MOSELEY ARCHITECTS
3200 NORFOLK STREET, RICHMOND, VIRGINIA, 23230
PHONE (804) 794-7555 FAX (804) 355-5690
MOSELEYARCHITECTS.COM

DRAWN BY:
SCRUMP

ATTACHMENT TO:

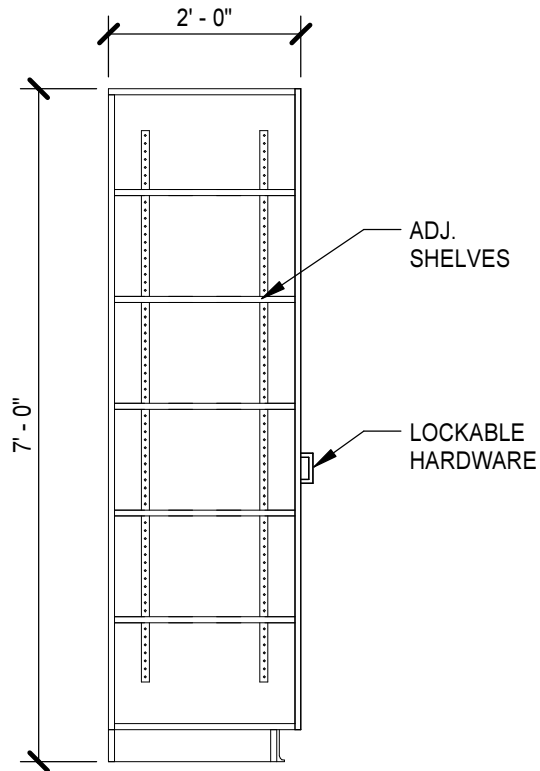
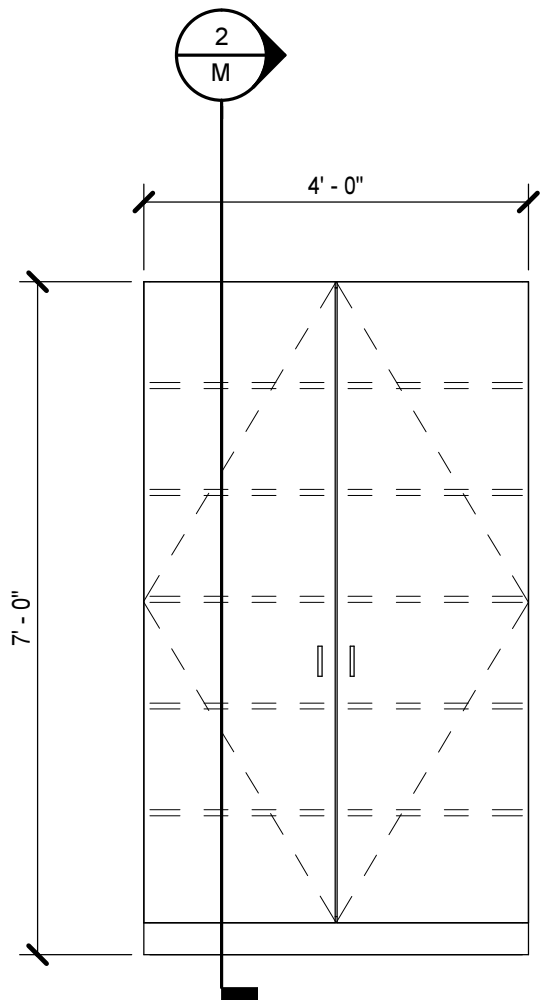
SUPPLEMENTAL DWG. NO.:

DATE:
11/21/16

PROJECT NO.:
544208

L.2

1/11/2017 4:36:11 PM



1 **WARDROBE CABINET**
 1/2" = 1'-0"

2 **SECTION**
 1/2" = 1'-0"

QUANTITY	FINISH	ROOM #	SCHOOL NAME

DRAWING TITLE:
M - WARDROBE CABINET

CONTRACT
 DWG NO.:

PROJECT:
NEWPORT NEWS ELEM. SCHOOLS CASEWORK PROTOTYPES
 School Address:

MOSELEY ARCHITECTS
 3200 NORFOLK STREET, RICHMOND, VIRGINIA, 23230
 PHONE (804) 794-7555 FAX (804) 355-5690
 MOSELEYARCHITECTS.COM

DRAWN BY:
SCRUMP

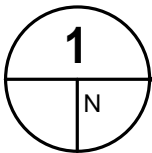
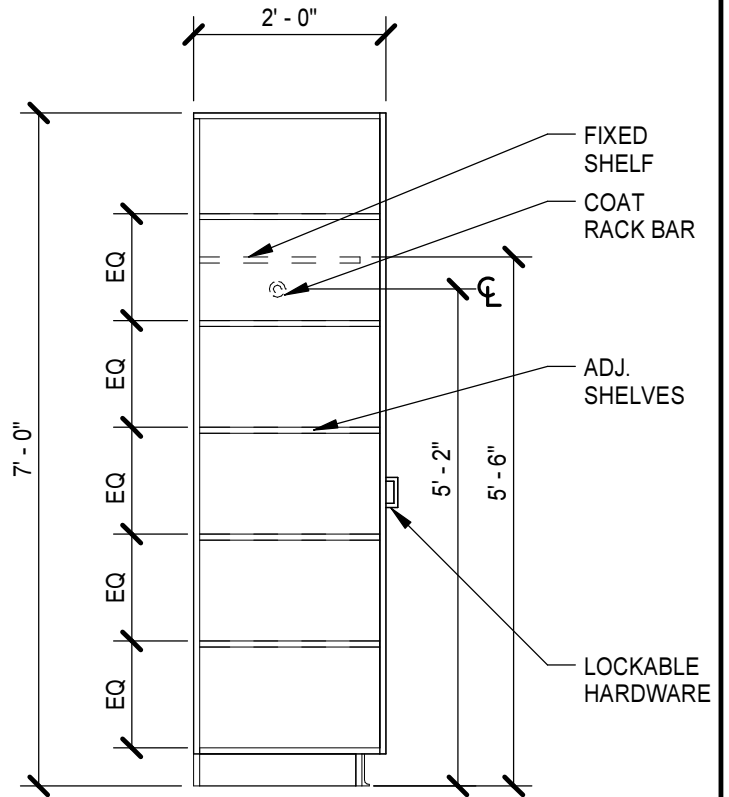
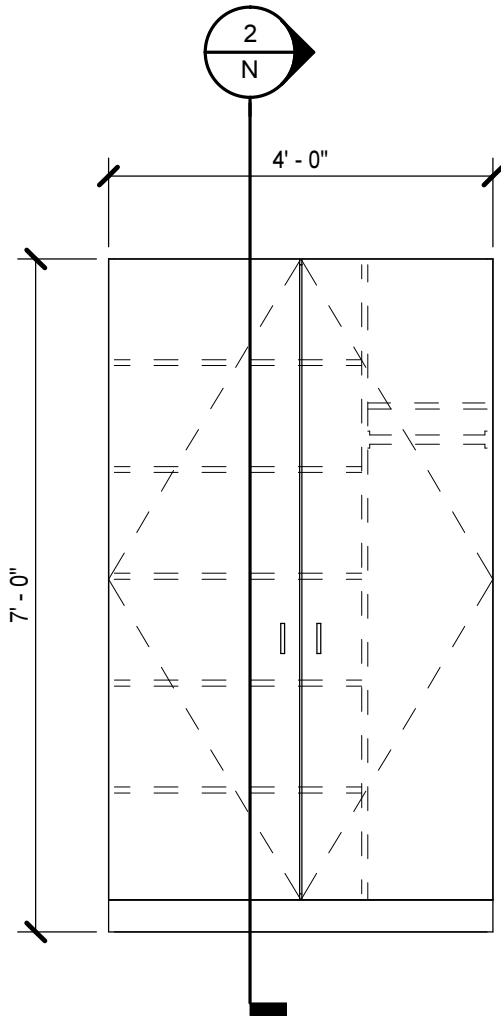
ATTACHMENT TO:

DATE:
11/21/16

PROJECT NO:
544208

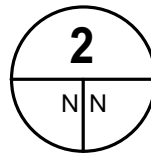
SUPPLEMENTAL DWG. NO:
M

1/11/2017 4:36:12 PM



TEACHER WARDROBE

1/2" = 1'-0"



SECTION

1/2" = 1'-0"

QUANTITY	FINISH	ROOM #	SCHOOL NAME

DRAWING TITLE:
N - TEACHER WARDROBE

CONTRACT
DWG NO.:

PROJECT:
NEWPORT NEWS ELEM. SCHOOLS CASEWORK PROTOTYPES
School Address:

MOSELEY ARCHITECTS

3200 NORFOLK STREET, RICHMOND, VIRGINIA, 23230
PHONE (804) 794-7555 FAX (804) 355-5690
MOSELEYARCHITECTS.COM

DRAWN BY:
SCRUMP

DATE:
11/21/16

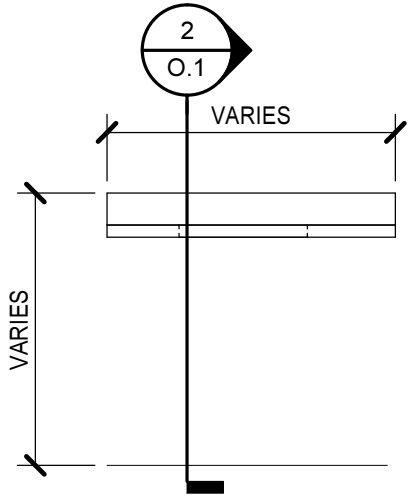
ATTACHMENT TO:

PROJECT NO:
544208

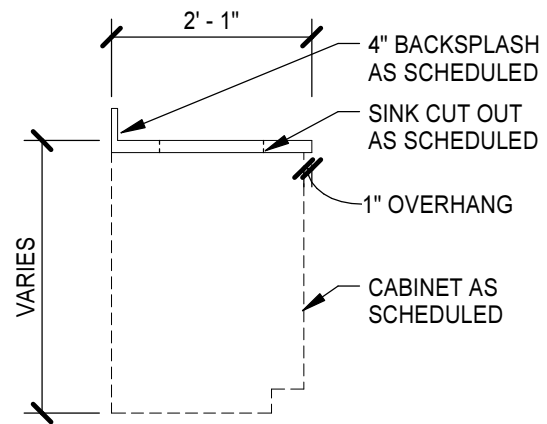
SUPPLEMENTAL DWG. NO.:

N

1/11/2017 4:36:12 PM



1 **25"D COUNTERTOP**
 O.1 1/2" = 1'-0"



2 **25"D COUNTERTOP**
 O.1 O.1 1/2" = 1'-0"

LENGTH	QUANTITY	FINISH	ROOM #	SCHOOL NAME

DRAWING TITLE:
O.1 - 25"D COUNTERTOP

CONTRACT
 DWG NO.:

PROJECT:
NEWPORT NEWS ELEM. SCHOOLS CASEWORK PROTOTYPES
 School Address:

MOSELEY ARCHITECTS
 3200 NORFOLK STREET, RICHMOND, VIRGINIA, 23230
 PHONE (804) 794-7555 FAX (804) 355-5690
 MOSELEYARCHITECTS.COM

DRAWN BY:
SCRUMP

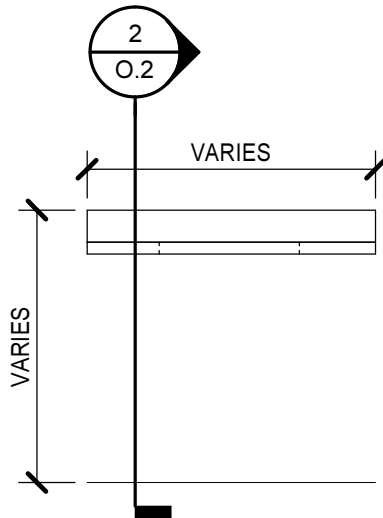
ATTACHMENT TO:

SUPPLEMENTAL DWG. NO.:
O.1

DATE:
11/23/16

PROJECT NO.:
544208

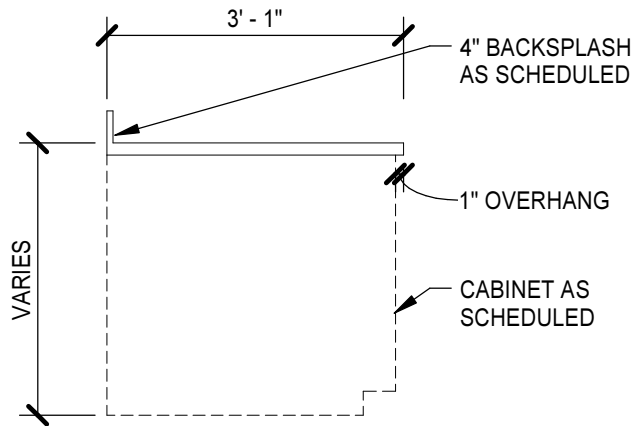
1/11/2017 4:36:12 PM



1
TYP O.2

37"D COUNTERTOP

1/2" = 1'-0"



2
TYP O.2

37"D COUNTERTOP

1/2" = 1'-0"

LENGTH	QUANTITY	FINISH	ROOM #	SCHOOL NAME

DRAWING TITLE:
O.2 - 37"D COUNTERTOP

CONTRACT
DWG NO.:

PROJECT:
NEWPORT NEWS ELEM. SCHOOLS CASEWORK PROTOTYPES
School Address:

MOSELEYARCHITECTS

3200 NORFOLK STREET, RICHMOND, VIRGINIA, 23230
PHONE (804) 794-7555 FAX (804) 355-5690
MOSELEYARCHITECTS.COM

DRAWN BY:
SCRUMP

ATTACHMENT TO:

SUPPLEMENTAL DWG. NO.:

DATE:
11/23/16

PROJECT NO.:
544208

O.2

1/11/2017 4:36:13 PM